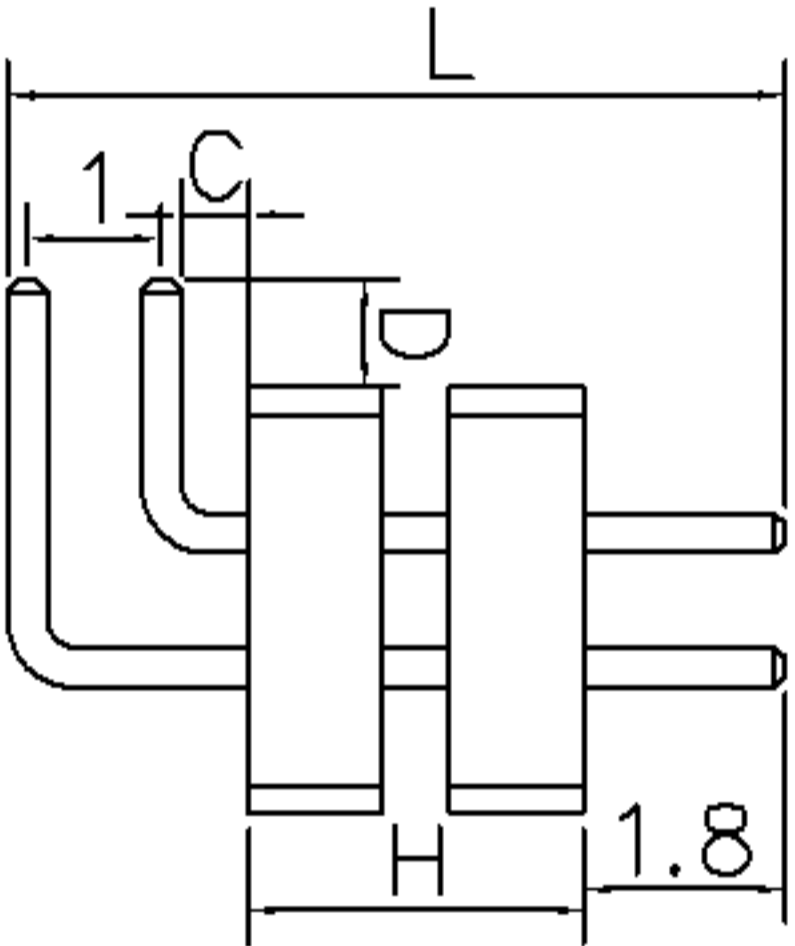
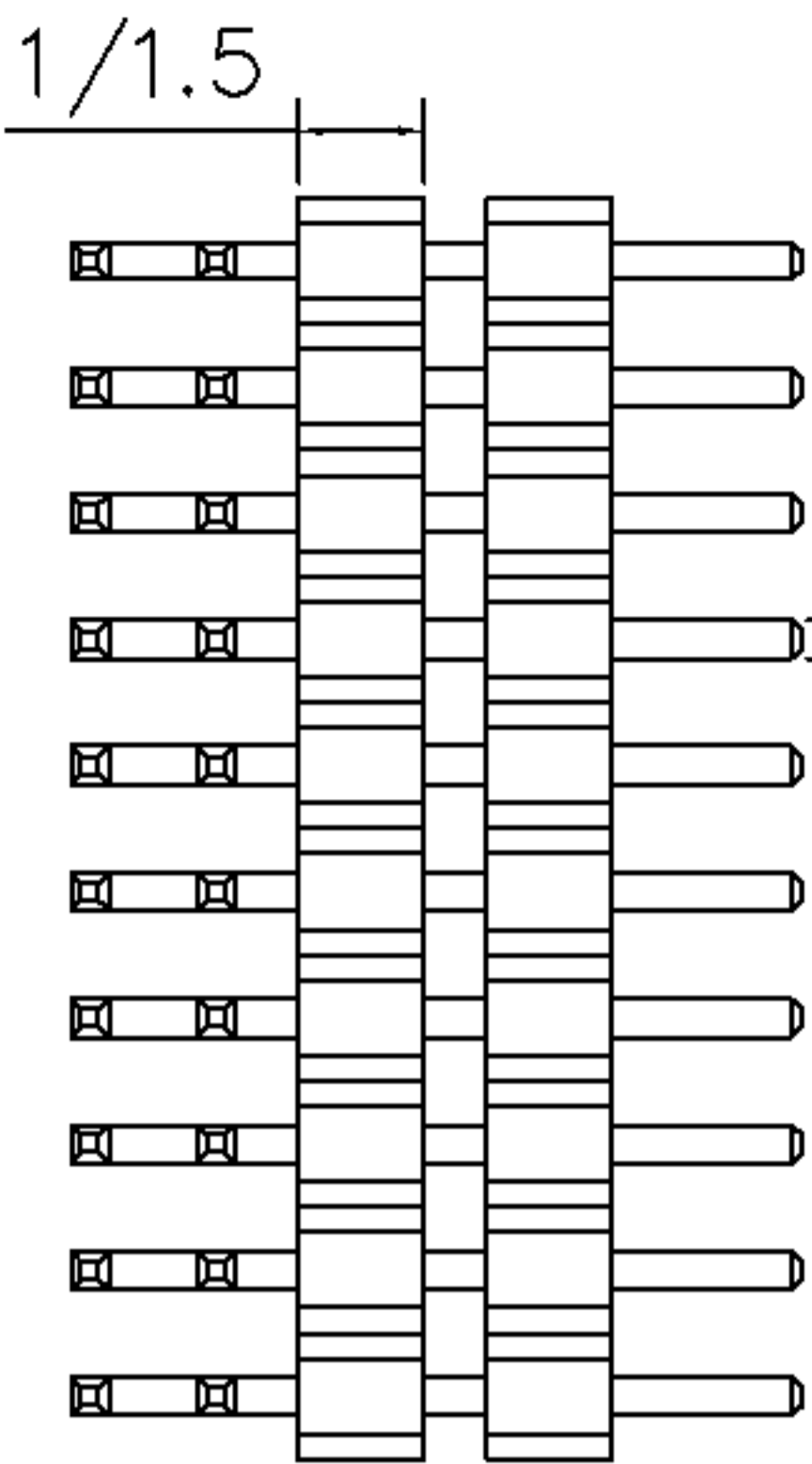
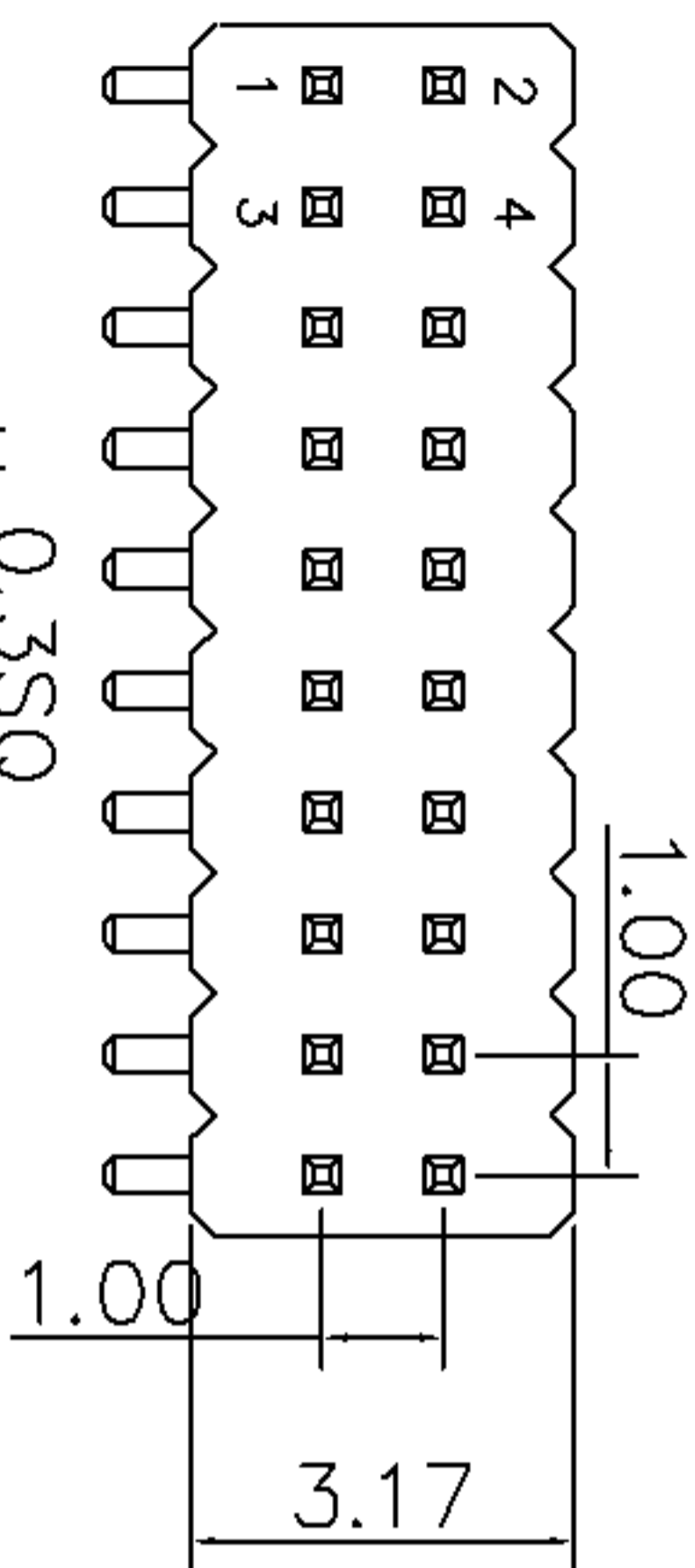


A	新版图	/	YSH
		2012.05.23	

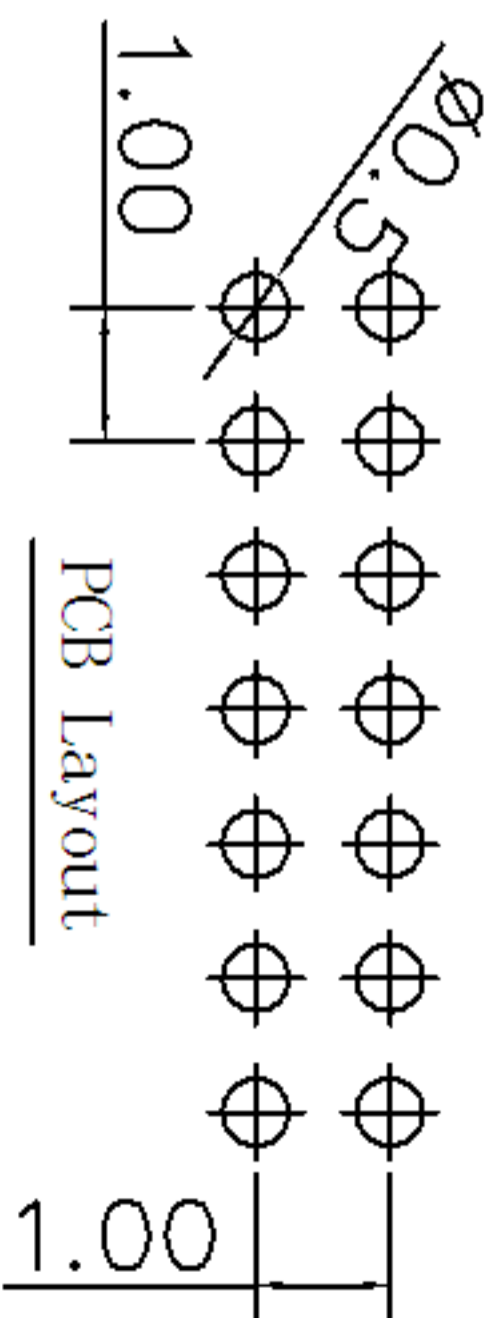


H、L、C、D的尺寸
可依客户要求订做



Technical Data:

Material:
Contact Material:Brass
Insulator Material:PA6T+30%GF
Electrical:
Current rating:0.75Amps/Contact max.
Contact resistance:<=20mohms/Contact
Insulation resistance:>=1000Mohms at V=100V
Withstanding Voltage:300V AC/Minute
Mechanical:
Operating Temperature:Gold plated :-55° C~105° C
Tin plated :-40° C~105° C
Soldering Temperature:260° C 10s Max.



TOLERANCE		ANGLE
ON		
.XXX±	0.05	
XX±	0.15	1°
X+	0.20	2°
X.±	0.30	

DRAWN	DATE	 武汉宇恒电子有限公司 WUHAN YUHENG ELECTRONIC CO., LTD
YSH	2012.05.23	
CHECKED	DATE	TITLE:
		排针系列-1.00 PIN距-双排-双塑料弯针
CLIENT APPROVED	DATE	REQ NO
		CLIENT P/N
		UNIT: mm
		SCALE: free
		FILE NO.: YH20120601A016