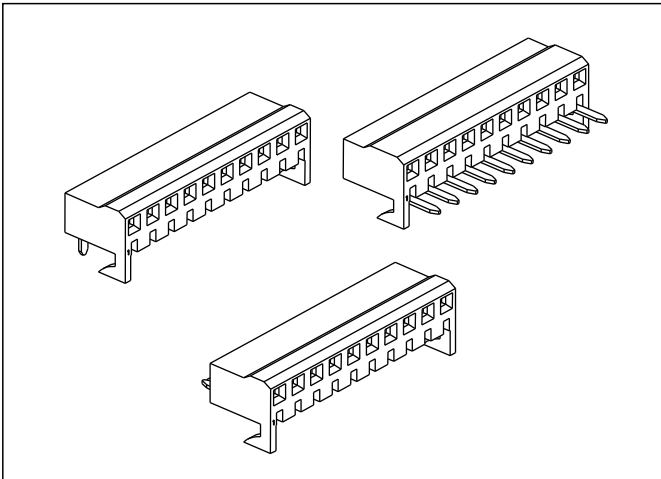


3.96mm PCB Connector

41815 Series /NS 2396 Series

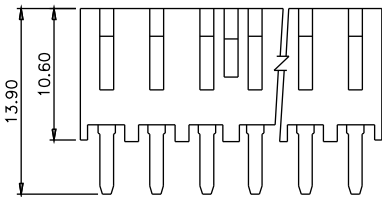
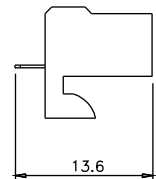
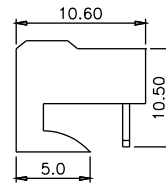
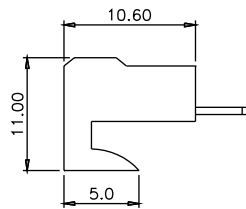
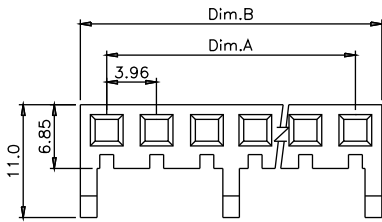


Specifications

Current rating:5.0AAC/DC
 Voltage rating:250V AC/DC
 Contact resistance:20m ohm. max.
 Insulation resistance:1000M ohm. Min.
 Withstanding voltage:1500V AC for one minute
 Operating temperature range:-25°C to +85°C

Material and Finish

Insulator:High Temp. Plastic(UL94V-0)
 Contact:Phosphor Bronze
 Plating:Tin Plated



P/N:41815S-XX

P/N:41815R-XX

P/N:41815BE-XX

Engineering Dimension

Circuits	Dim. A	Dim. B	Circuits	Dim. A	Dim. B
2	3.96	8.06	10	35.64	39.74
3	7.92	12.02	11	39.60	43.70
4	11.88	15.98	12	43.56	47.66
5	15.84	19.94	13	47.52	51.62
6	19.80	23.90	14	51.48	55.58
7	23.76	27.86	15	55.44	59.54
8	27.72	31.82			
9	31.68	35.78			

Ordering Information

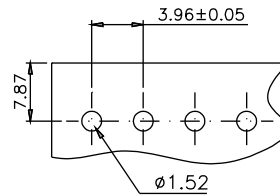
41815S-XX

① ②

① S: Straight Type
 R: Right Angle Type
 BE: Bottom Entry

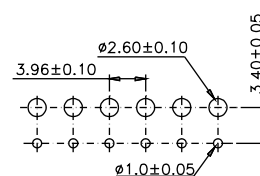
② No. Of Contacts

Recommended PCB Layout



P/N:41815S-XX

P/N:41815R-XX



P/N:41815BE-XX

Unit:mm