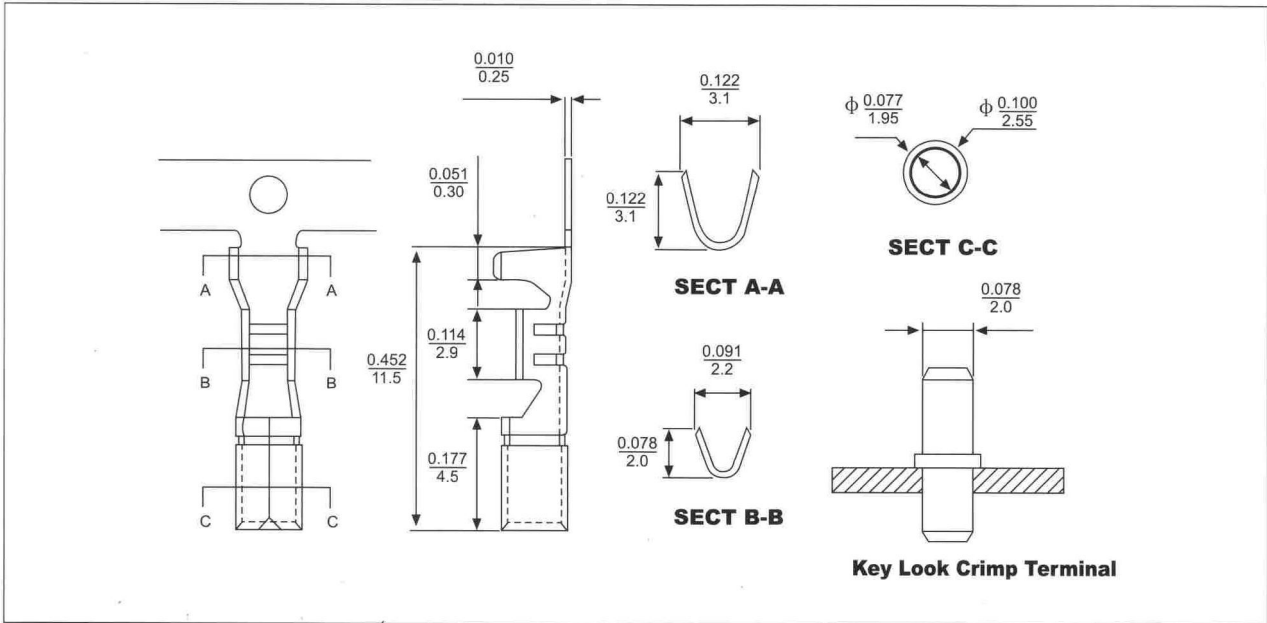


6639 KEY LOOK Crimp Terminal 180°

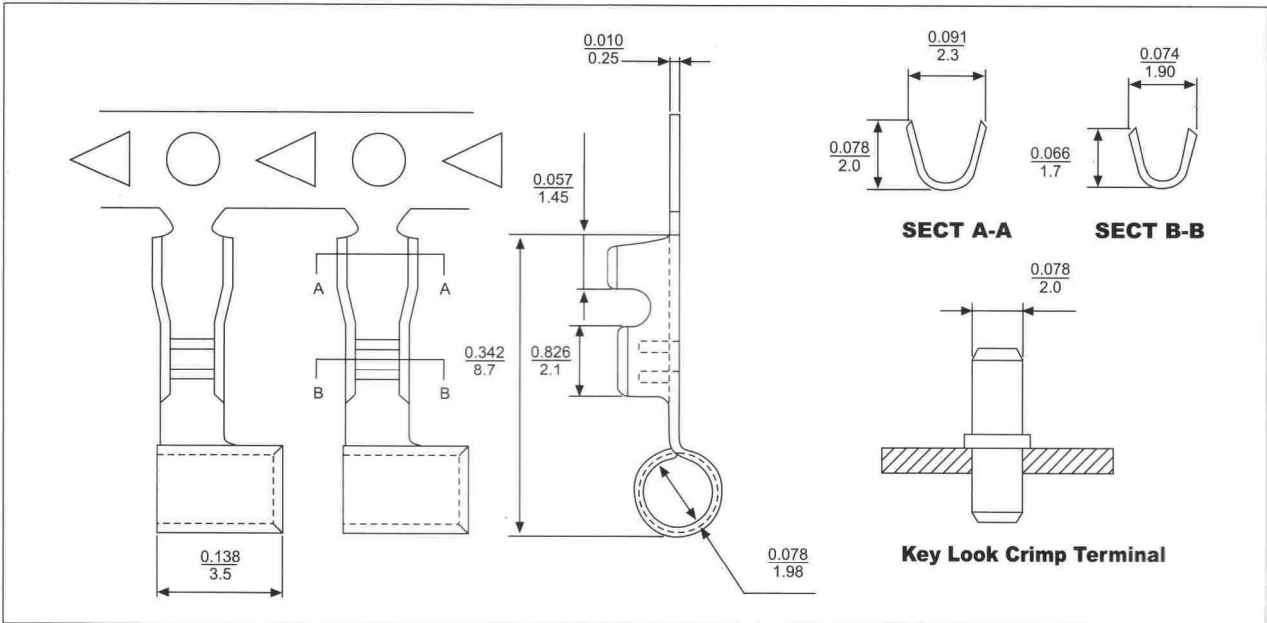


ORDER INFORMATION:

Dimension:inch/mm

Part No.	Material	Thickness	Finish	Wire Range	Q.ty/roll
6639T	Brass/phosphor.Bronze	0.25mm	Tin	AWG#18-#22	10.000PC

6640 KEY LOOK Crimp Terminal 90°



ORDER INFORMATION:

Dimension:inch/mm

Part No.	Material	Thickness	Finish	Wire Range	Q.ty/roll
6640T	Brass/phosphor.Bronze	0.25mm	Tin	AWG#20-#26	10.000PC