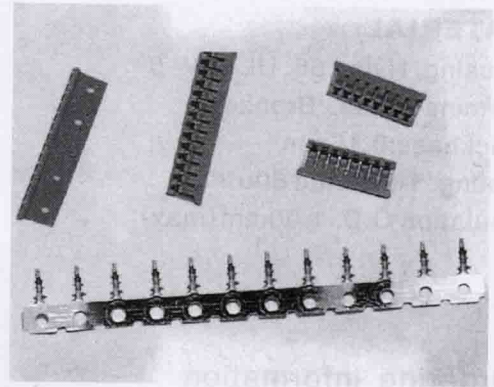


0.049" (1.25mm) WIRE TO BOARD CONNECTOR

JAE-1.25 Series

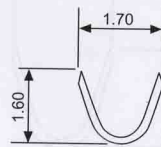
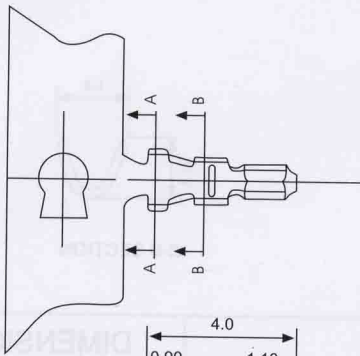
MATERIAL:

Housing: Nylon 66. UL 94V-0
 Terminal: Phos. Bronze
 Thickness: 0.15mm
 Plating: Tin plated 60u"
 Insulation O.D: 1.00mm (max)

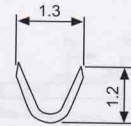


Ordering Information

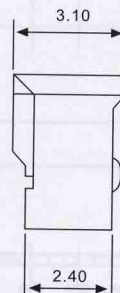
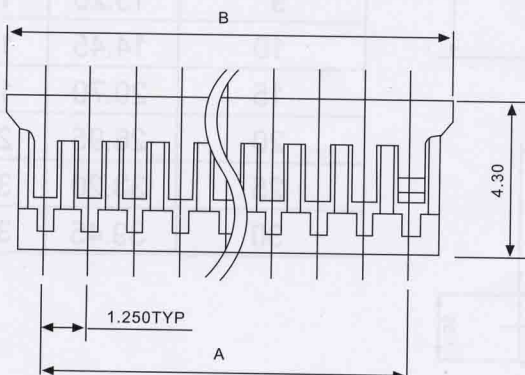
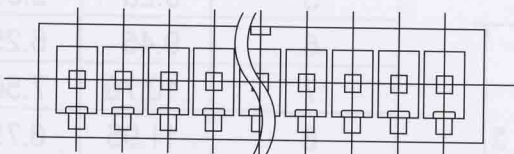
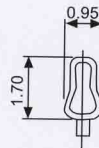
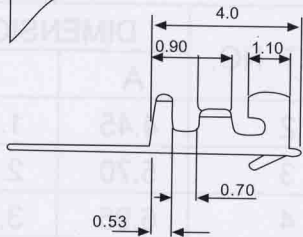
Part No.	Wire Range	Insulation O.D.	Material	Finish	Q'ty/roll	Note
JAE-1.25	AWG#28-#32	1.00mm(max)	Phosphor bronze	Tin-Plated	10,000pcs	



A-A SECTION



B-B SECTION



PART NO.	DIMENSION.	
	A	B
2	1.25	3.95
3	2.50	5.20
4	3.75	6.45
5	5.00	7.70
6	6.25	8.95
7	7.50	10.20
8	8.75	11.45
9	10.00	12.70
10	11.25	13.95
11	12.50	15.20
12	13.75	16.45
13	15.00	17.70
14	16.25	18.95
15	17.50	20.50