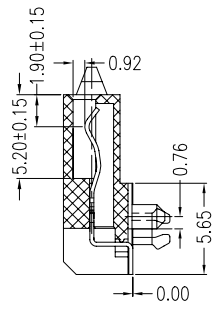
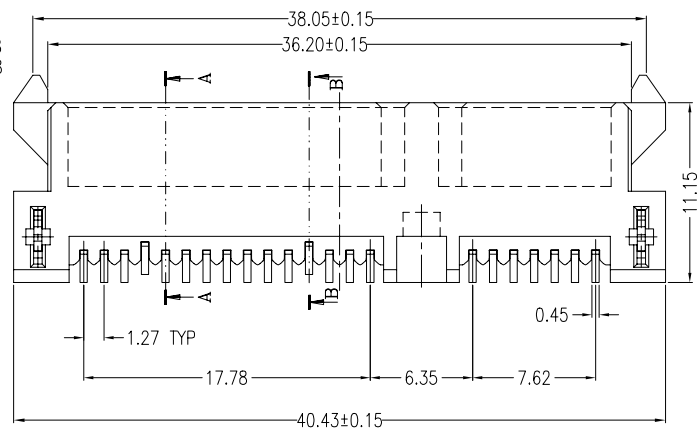
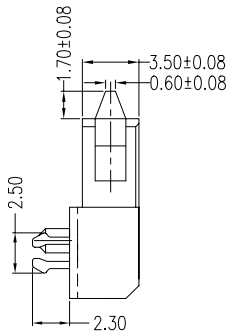
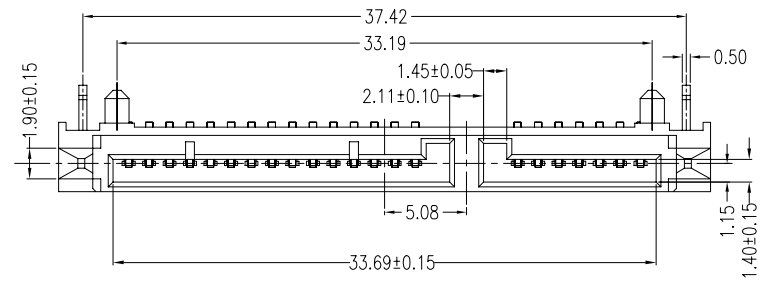
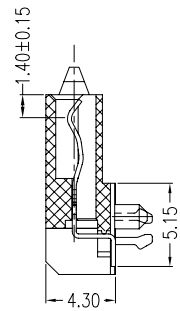


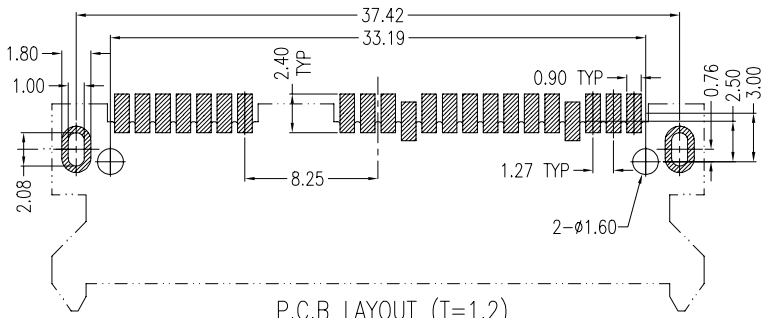
REV.	ECN.NO.	DATE
A	RELEASED	01/09-'07



SECT A-A



SECT B-B



P.C.B LAYOUT (T=1.2)
TOP VIEW

Notes:

*Material

- Housing: LCP, UL 94V-0 rated;
- Color: Black.
- Contact: Phosphor Bronze
- Plating: Gold Plating over Nickel on contact area
- Tin plating on solder Tail.

*Mechanical

- Insertion Force: 45N max.
- Withdrawal Force: 10N min.
- Durability: 500 cycles

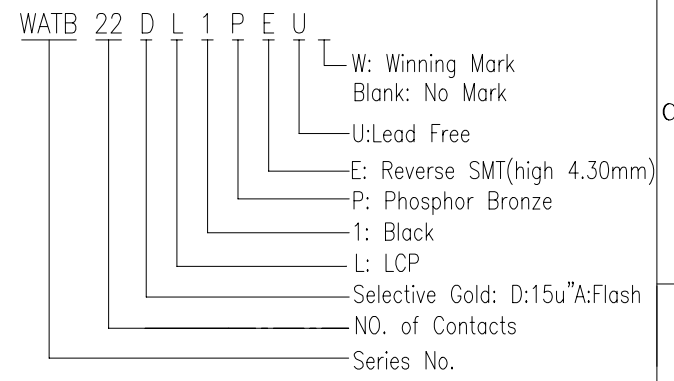
*Electrical Specification

- Operation Voltage: 100 VAC max.
- Current Rating: 1.5 Ampere per contact
- Contact Resistance: 30 Milliohms max.
- Insulation Resistance: 1000 Megohms min.
- Dielectric Withstanding Voltage: 500 VAC

*Environmental

- Operating Temperature: -55°C to +125°C

*How to Order:



REV	Units			mm	Scale	2:1	Drawing By	Data	Title		
	Tolerance Unless						WHL	01/15-'07	Date	01/09-'07	WATB S ATA 7+15P 90°Female Reverse SMT Type(4.30mm)
	Otherwise Specified						Reviewed By	Data	Sheet	1 of 1	
	.X	~	±0.38				Jflee	01/15-'07	Third Angle Projection		
	.XX	~	±0.25				Approval By	Data	Drawing No.	W070109	
	.XXX	~	±0.20				Richard	01/15-'07	REV	A	
	Angle	~	± 3°								