

**NOTES:**

**\*Material**

Body: LCP,PPS,Nylon6T Or Nylon9T, UL 94V-0 Rated.  
 Color: White .  
 Contacts: Brass .  
 Plating: Gold plating over Nickel on contact area;  
 Tin Plating On Solder Tail.  
 CAV.NO.:A~H.

**\*Mechanical:**

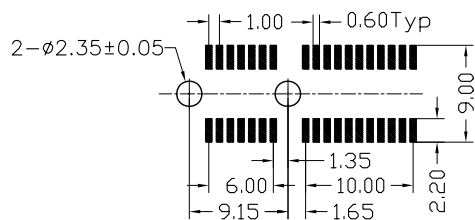
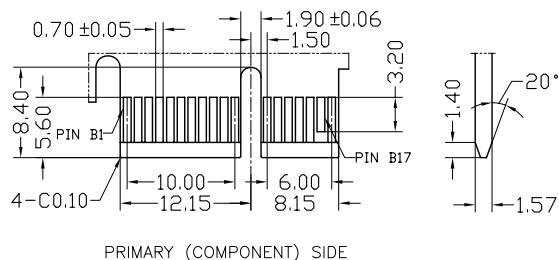
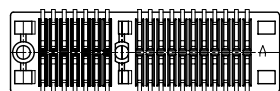
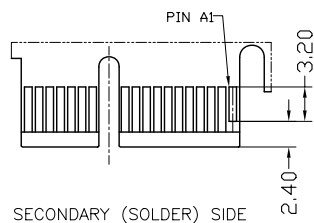
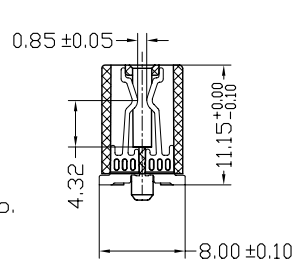
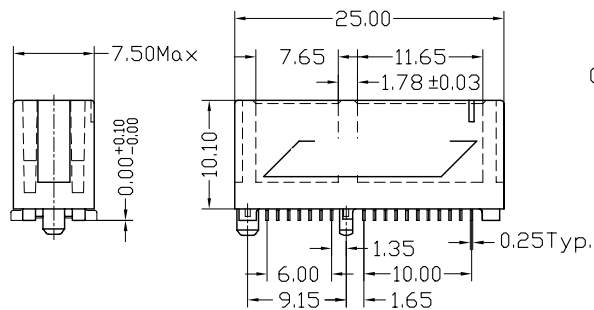
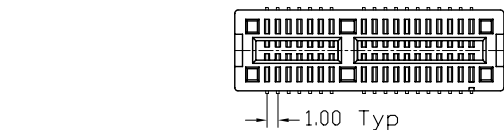
Insertion Force: 1.15N max per contact pair;  
 Withdrawal Force: 0.15N min per contact pair;  
 Contact Retention Force: 4.9N min per contact;

**\*Electrical Specification**

Contact Resistance : 30 Milliohms Max.  
 Current Resistance : 1.1 Ampere  
 Insulation Resistance : 1000 Megohms Min, At 500V AC.  
 Operating Temperature : -55°c to +105°c

**\*How to order:**

W3GD-036 A L 1 B 5 2 U W  
 PCI Express ————  
 Loose Piece Pin ————  
 Number Of Contact ————  
 Gold A:Flash B:5u" C:10u"  
 L:LCP N6:Nylon6T  
 P:PPS N9:Nylon9T  
 1:Black 3:White ————  
 W:Winning Mark  
 U:Lead Free  
 Blank:Sn Pb  
 2:Plastic Post  
 5:SMT Type  
 B:Brass  
 P:Phosphor Bronze



P.C.B LAYOUT

| REV | Units                                | mm | Scale | Drawing By  | Data |                        |             |       |                                                                      |
|-----|--------------------------------------|----|-------|-------------|------|------------------------|-------------|-------|----------------------------------------------------------------------|
|     | Tolerance Unless Otherwise Specified |    |       | Reviewed By | Data | Date                   | 1 of 1      | Title | PCI Express Connector<br>Loose Piece Pin SMT Type 36P(plastic Posts) |
|     | .X                                   | ~  | ±0.38 | Approval By | Data | Sheet                  |             |       |                                                                      |
|     | .XX                                  | ~  | ±0.25 |             |      | Third Angle Projection | Drawing No. |       | REV                                                                  |
|     | .XXX                                 | ~  | ±0.20 |             |      |                        |             |       |                                                                      |
|     | Angle                                | ~  | ± 3°  |             |      |                        |             |       |                                                                      |

**NOTES:**

**\*Material**

Body: LCP, PPS, Nylon6T Or Nylon9T, UL 94V-0 Rated.  
 Color: White .  
 Contacts: Brass.  
 Plating: Gold plating over Nickel on contact area;  
 Tin Plating On Solder Tail.  
 CAV.NO.:A~H.

**\*Mechanical:**

Insertion Force: 1.15N max per contact pair;  
 Withdrawal Force: 0.15N min per contact pair;  
 Contact Retention Force: 4.9N min per contact;

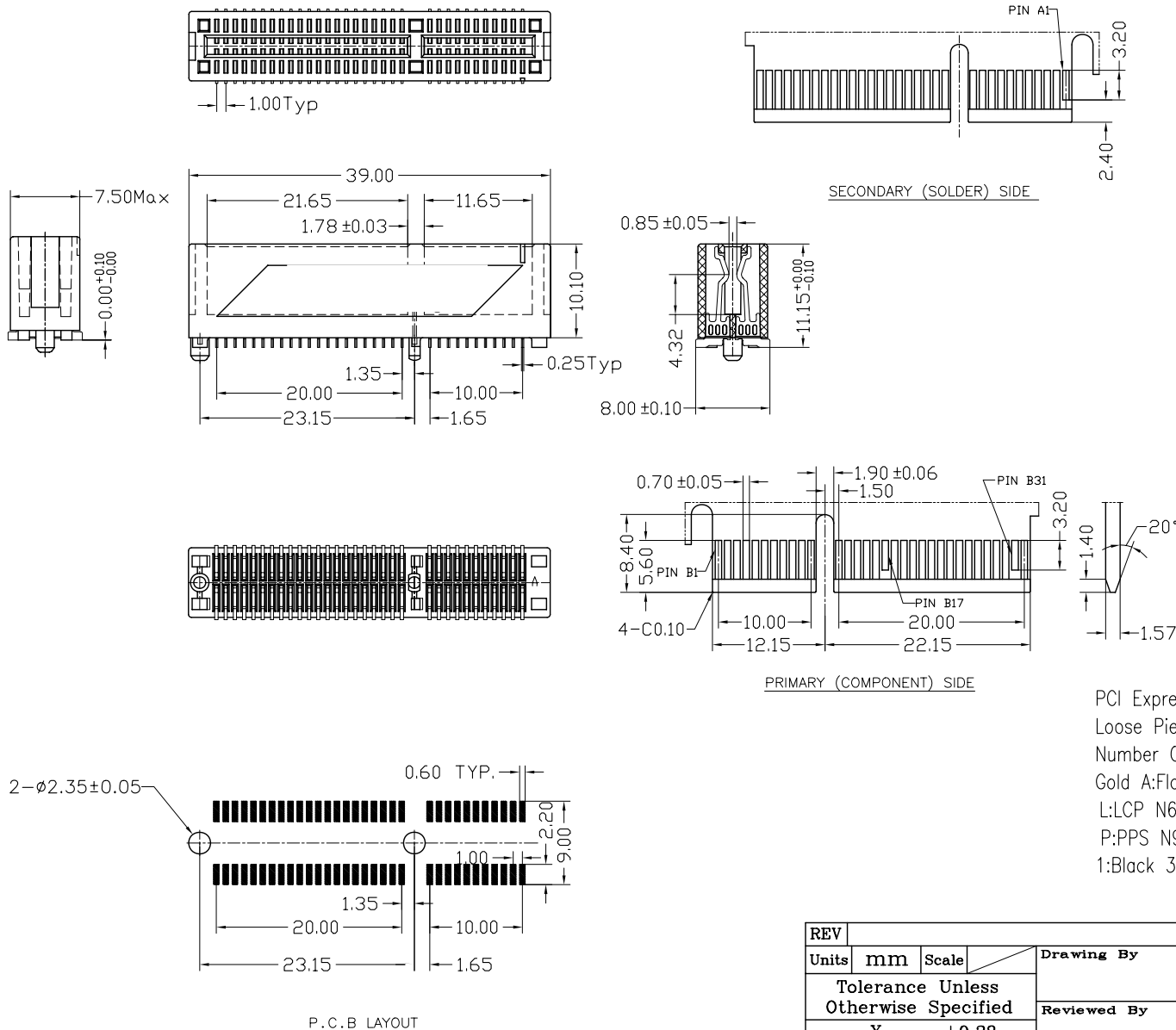
**\*Electrical Specification**

Contact Resistance : 30 Milliohms Max.  
 Current Resistance : 1.1 Ampere  
 Insulation Resistance : 1000 Megohms Min, At 500V AC.  
 Operating Temperature : -55°C to +105°C

**\*How to order:**

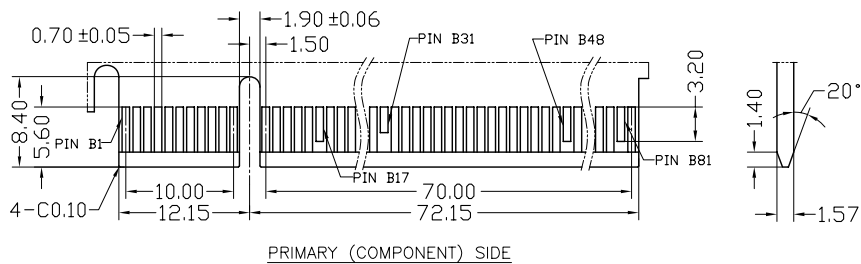
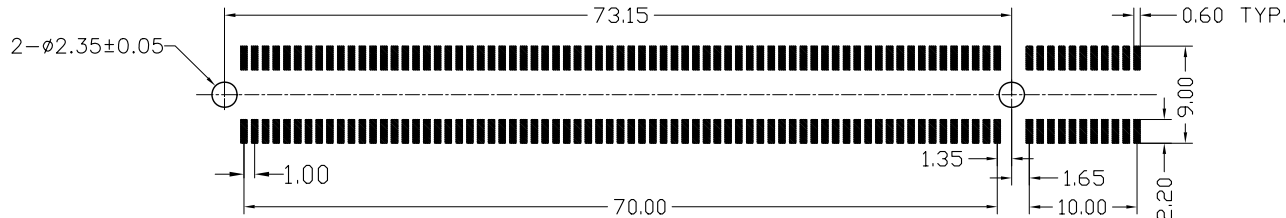
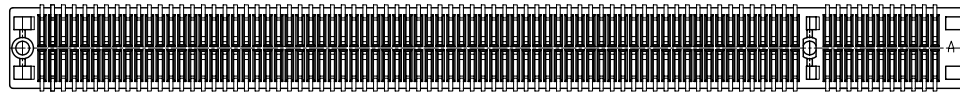
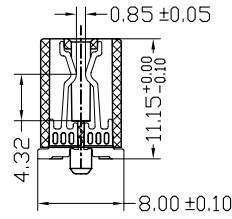
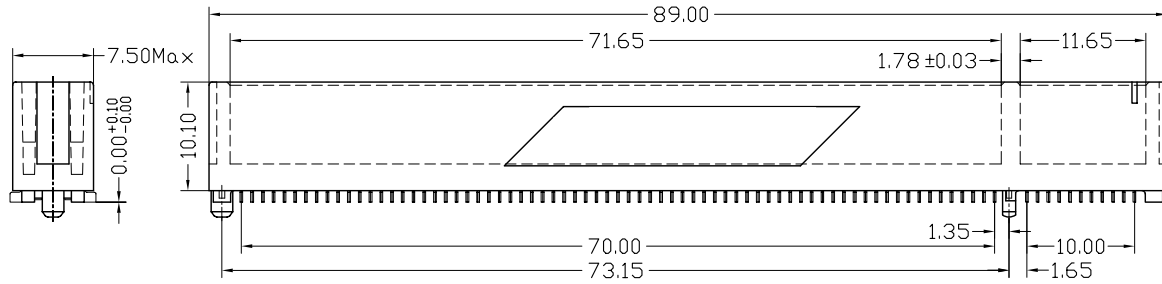
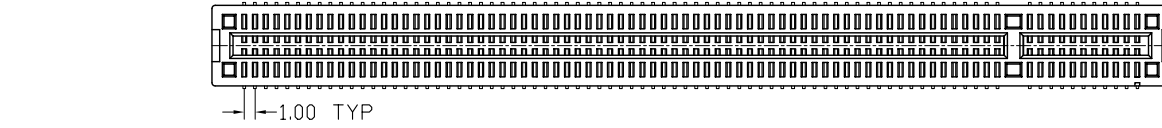
W3GD-064 A L 1 B 5 2 U W

PCI Express ———— W:Winning Mark  
 Loose Piece Pin ———— U:Lead Free  
 Number Of Contact ———— Blank:Sn Pb  
 Gold A:Flash B:5u" C:10u" ———— 2:Plastic Post  
 L:LCP N6:Nylon6T ———— 5:SMT Type  
 P:PPS N9:Nylon9T ———— B:Brass  
 1:Black 3:White ———— P:Phosphor Bronze

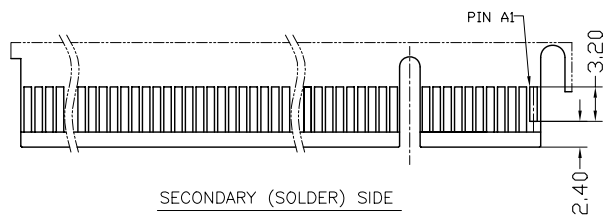


| REV                                  |         | Units |  | Drawing By  |  | Data                                         |        |
|--------------------------------------|---------|-------|--|-------------|--|----------------------------------------------|--------|
| Tolerance Unless Otherwise Specified |         | mm    |  | Reviewed By |  | Data                                         |        |
| .X                                   | ~ ±0.38 |       |  | Approval By |  | Data                                         |        |
| .XX                                  | ~ ±0.25 |       |  |             |  | Date                                         |        |
| .XXX                                 | ~ ±0.20 |       |  |             |  | Sheet                                        | 1 of 1 |
| Angle                                | ~ ± 3°  |       |  |             |  | Third Angle Projection                       | Title  |
|                                      |         |       |  |             |  | PCI Express Connector                        |        |
|                                      |         |       |  |             |  | Loose Piece Pin SMT Type 64P (plastic Posts) |        |
|                                      |         |       |  |             |  | Drawing No.                                  | REV    |





PRIMARY (COMPONENT) SIDE



SECONDARY (SOLDER) SIDE

**NOTES:**

**\*Material**

Body: LCP,PPS,Nylon6T Or Nylon9T, UL 94V-0 Rated.  
 Color: White .  
 Contacts: Brass.  
 Plating: Gold plating over Nickel on contact area;  
 Tin Plating On Solder Tail.  
 CAV.NO.:A~H.

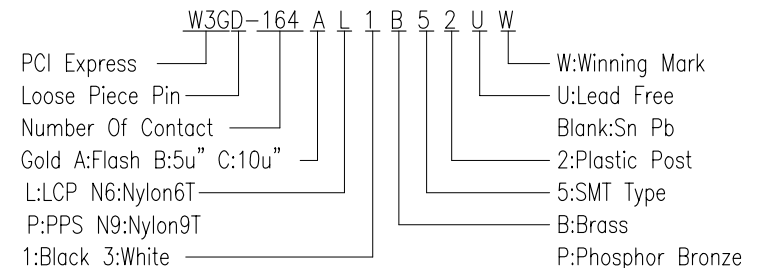
**\*Mechanical:**

Insertion Force: 1.15N max per contact pair;  
 Withdrawal Force: 0.15N min per contact pair;  
 Contact Retention Force: 4.9N min per contact;

**\*Electrical Specification**

Contact Resistance : 30 Milliohms Max.  
 Current Resistance : 1.1 Ampere  
 Insulation Resistance : 1000 Megohms Min, At 500V AC.  
 Operating Temperature : -55°c to +105°c

**\*How to order:**



| REV | Units                                | mm | Scale | Drawing By  | Data |
|-----|--------------------------------------|----|-------|-------------|------|
|     | Tolerance Unless Otherwise Specified |    |       | Reviewed By | Data |
|     | .X                                   | ~  | ±0.38 | Approval By | Data |
|     | .XX                                  | ~  | ±0.25 |             |      |
|     | .XXX                                 | ~  | ±0.20 |             |      |
|     | Angle                                | ~  | ± 3°  |             |      |

| Date | Sheet  | Title                                         |
|------|--------|-----------------------------------------------|
|      | 1 of 1 | PCI Express Connector                         |
|      |        | Loose Piece Pin SMT Type 164P (plastic Posts) |

| Third Angle Projection | Drawing No. | REV |
|------------------------|-------------|-----|
|                        |             |     |